

COMPARE-PHC



CENTRE FOR OBESITY MANAGEMENT & PREVENTION RESEARCH EXCELLENCE IN PRIMARY HEALTH CARE

Growing healthy

Developing an innovative model to improve infant feeding practices of socioeconomically disadvantaged families: the Growing healthy program

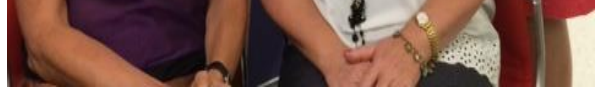
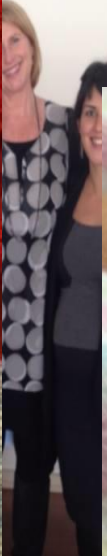
Elizabeth Denney-Wilson, Rachel Laws, Georgie Russell, Karen Campbell on behalf of the Growing healthy team



Acknowledgements

The research reported in this presentation is a project of the Australian Primary Health Care Research Institute, which is supported by a grant from the Australian Government Department of Health. The information and opinions contained in it do not necessarily reflect the views or policy of the Australian Primary Health Care Research Institute or the Australian Government Department of Health.





Background

- Early intervention is crucial- especially in disadvantaged families
- Role of parents in providing food environment and shaping behaviours
- Higher rates of obesity in disadvantaged families poorly understood
- Role of PHC: almost universal access but substantial barriers reported



Development Process

